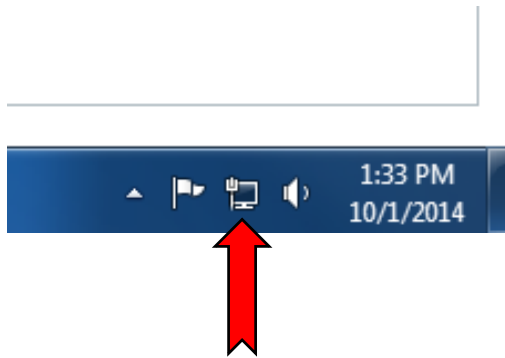
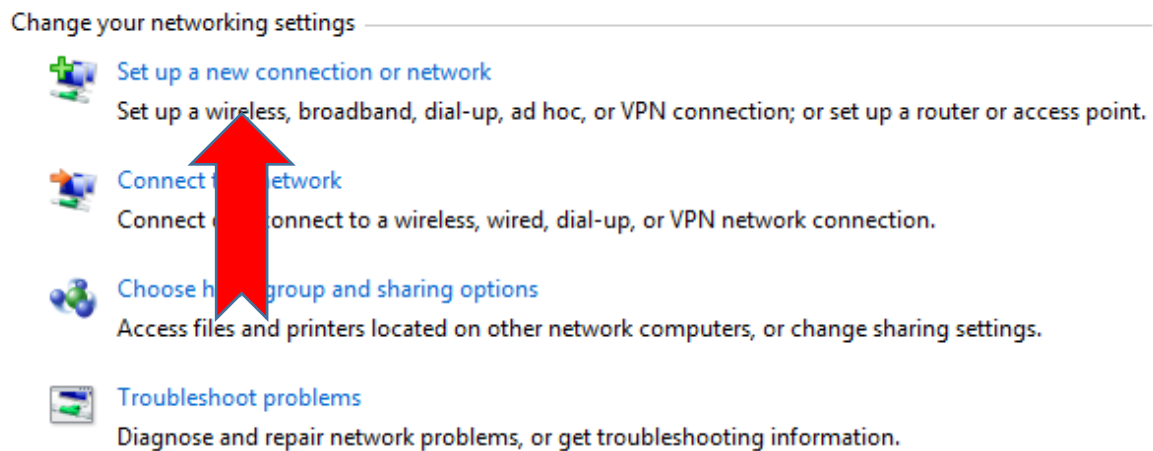


Here's an alternative way to connect to Anyconnect for install.

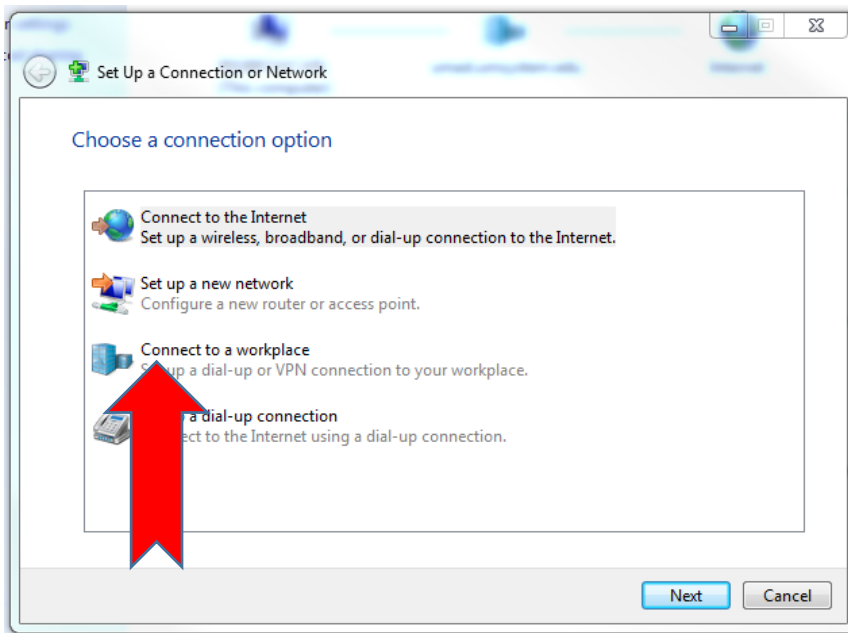
Right click on network icon in system tray and open "Network and Sharing Center".



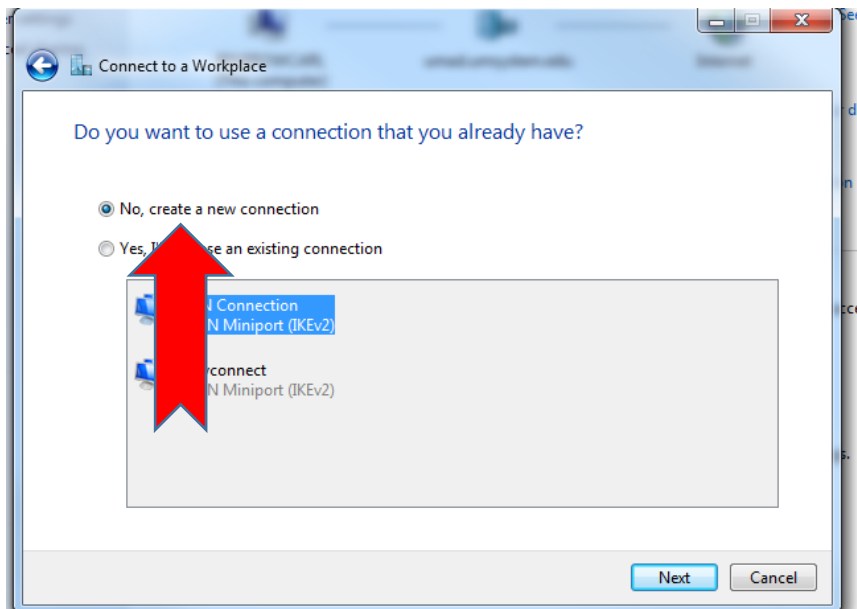
Click on "Set up a new connection or network."



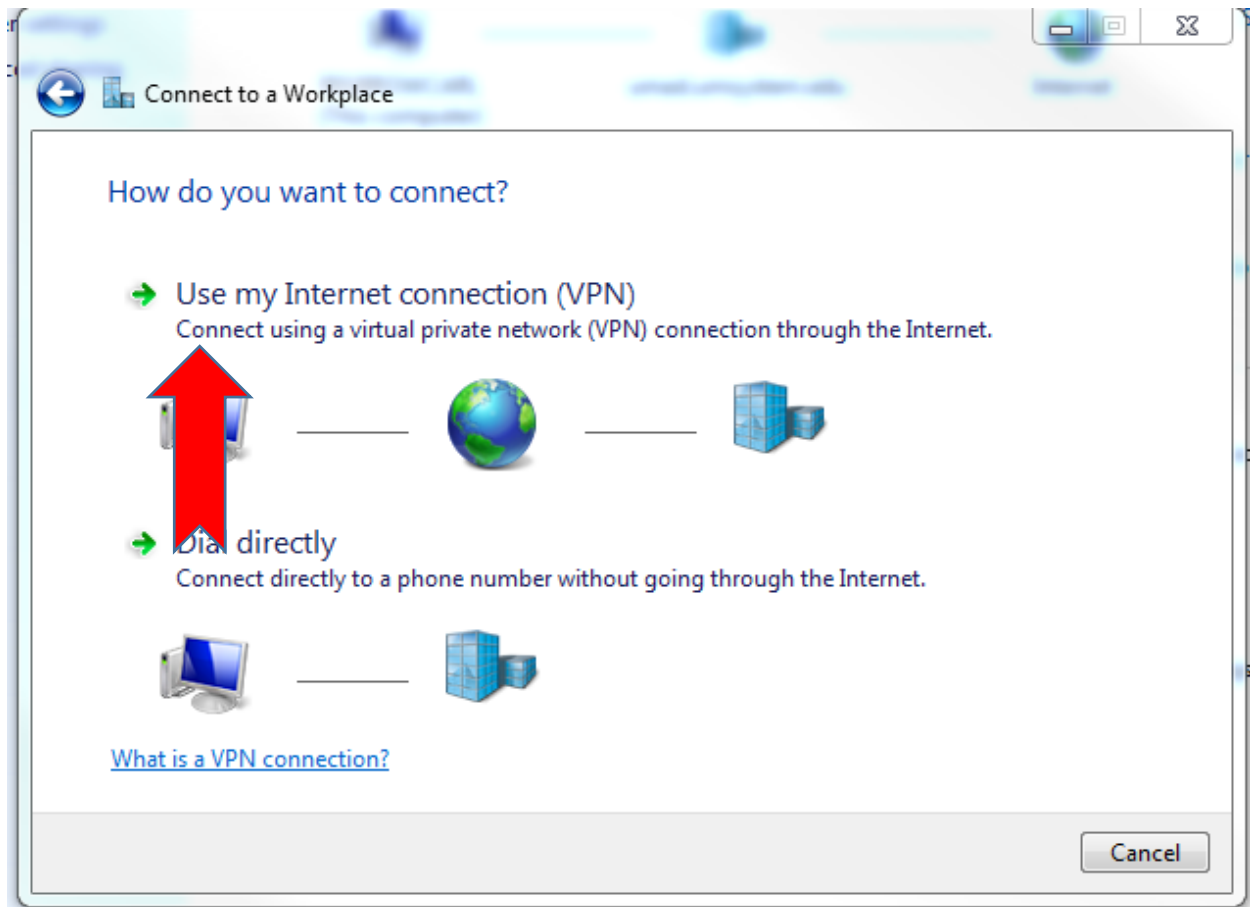
Click on “Connect to a Workplace.”



If you get this pop up then click on “No, create a new Connection”
If not, please go to next step.



Click on "Use my Internet connection (VPN)"



Make sure that every field you see is filled out the same way. Click “Next” after you are done.

Connect to a Workplace

Type the Internet address to connect to

Your network administrator can give you this address.

Internet address:

Destination name:

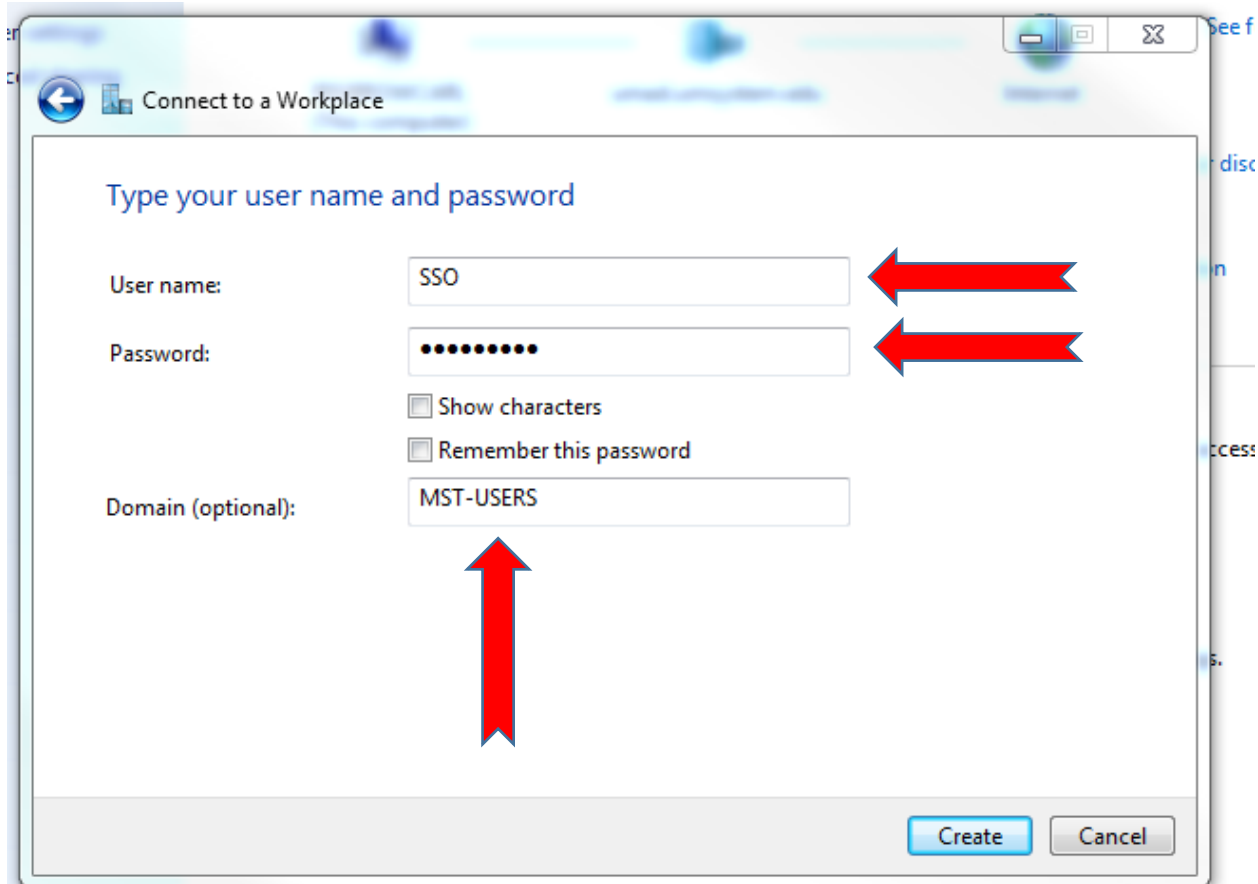
Use a smart card

Allow other people to use this connection
This option allows anyone with access to this computer to use this connection.

Don't connect now; just set it up so I can connect later

Next Cancel

Make sure to sign in with just the SSO ID only. Then click the Create button.

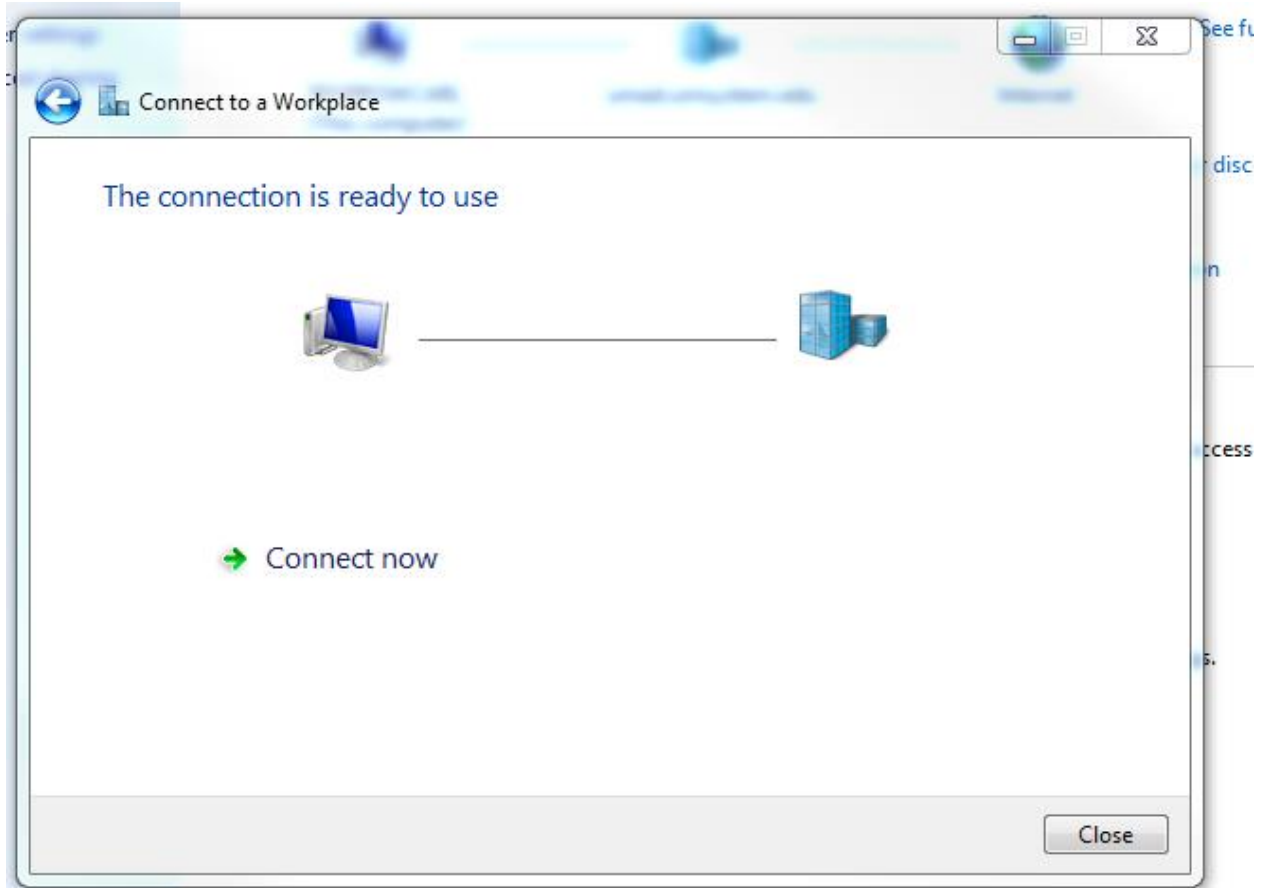


The image shows a 'Connect to a Workplace' dialog box with the following fields and options:

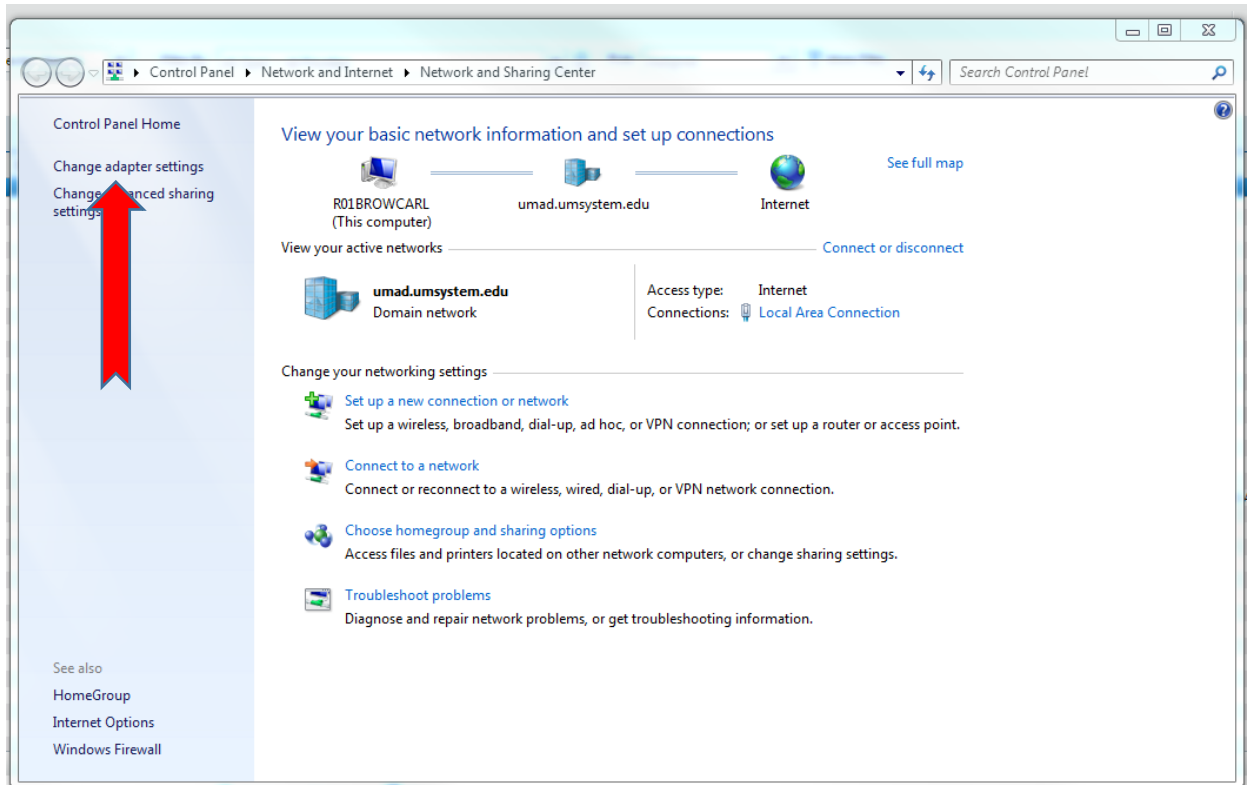
- User name:** A text box containing 'SSO'. A red arrow points to this field from the right.
- Password:** A text box containing ten black dots. A red arrow points to this field from the right.
- Show characters:** An unchecked checkbox.
- Remember this password:** An unchecked checkbox.
- Domain (optional):** A text box containing 'MST-USERS'. A red arrow points to this field from below.

At the bottom right of the dialog box, there are two buttons: 'Create' (highlighted in blue) and 'Cancel'.

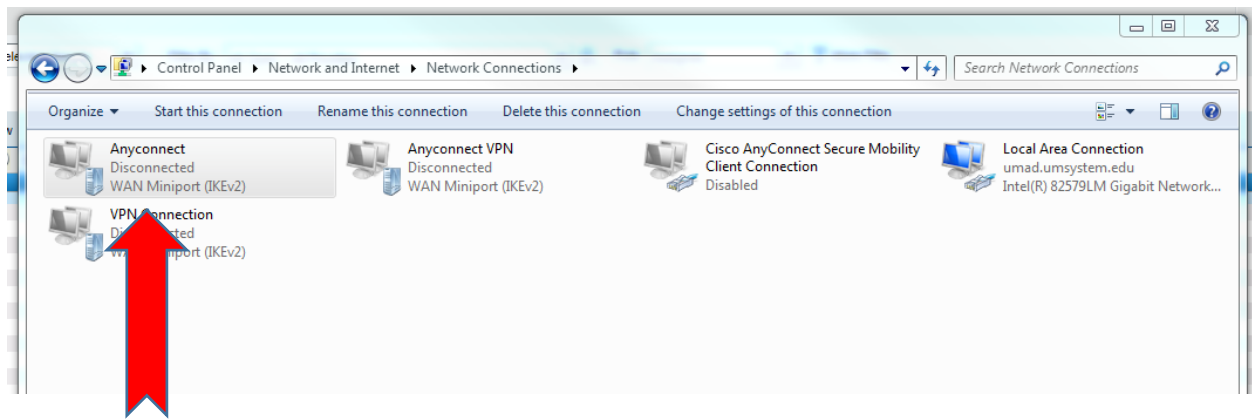
Make sure you **click close**. Do not connect.



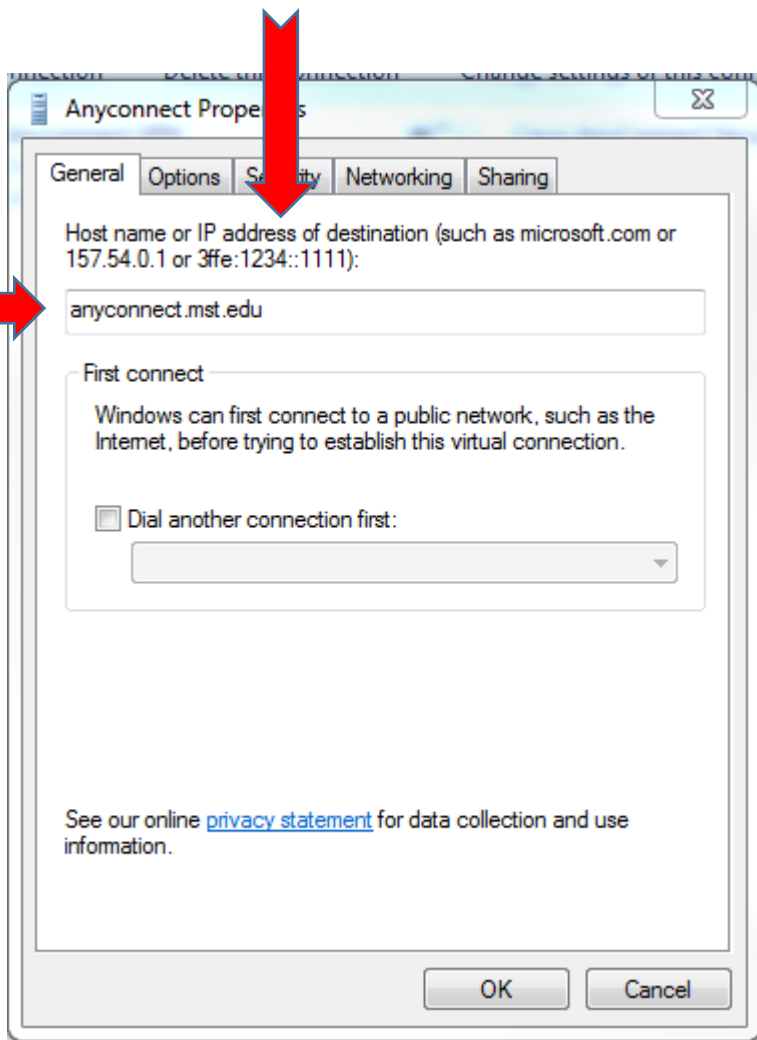
Go back to the Network and Sharing Center. Then click on the “Change adapter Settings”



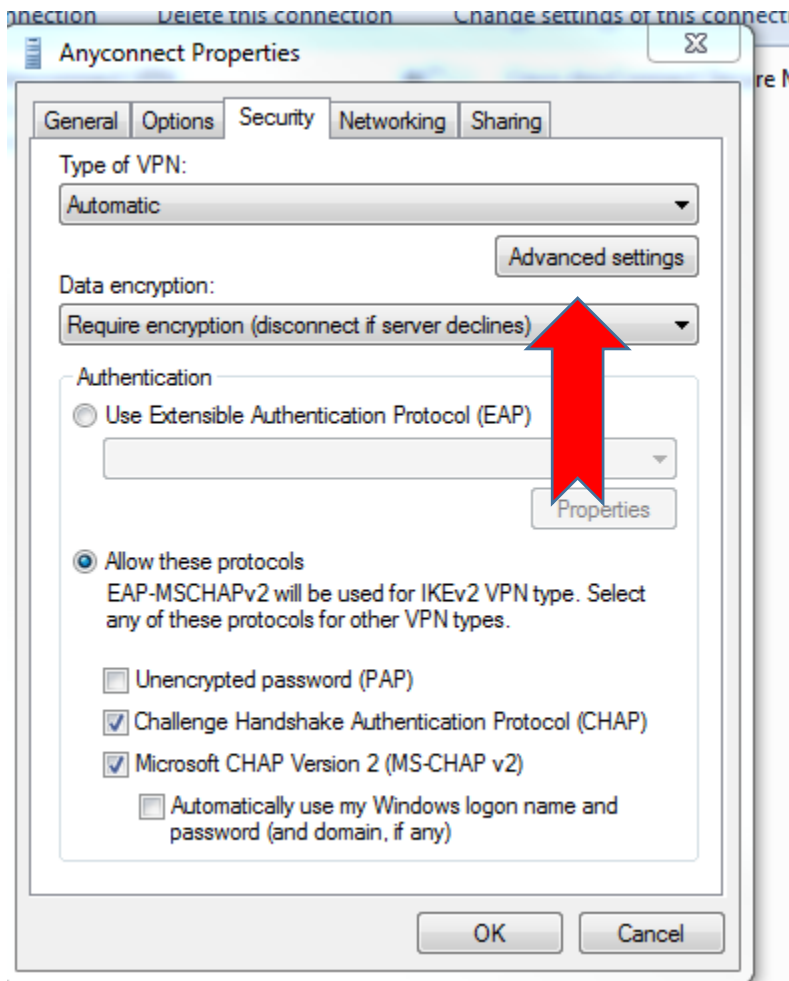
Right click on the Anyconnect VPN you just created and go to **Properties**.



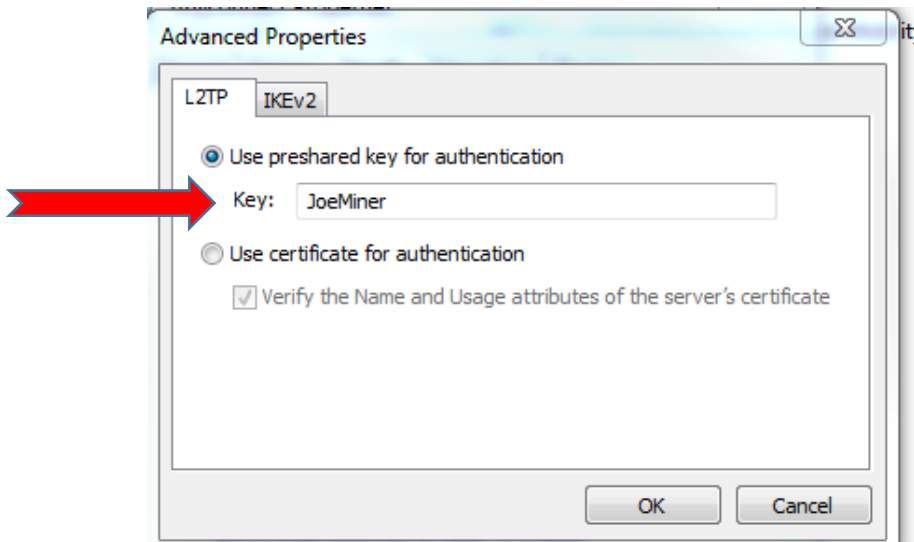
Make sure the anyconnect.mst.edu is listed under the General Tab, then Click on the Security tab



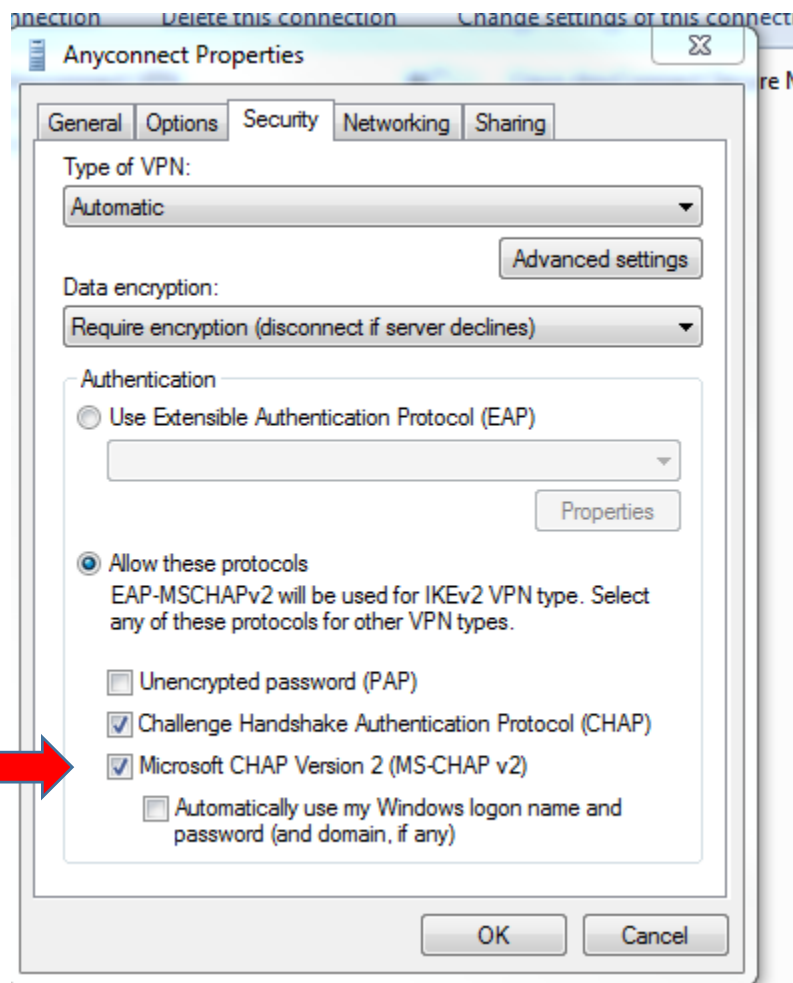
Select Advanced settings under Type of VPN.



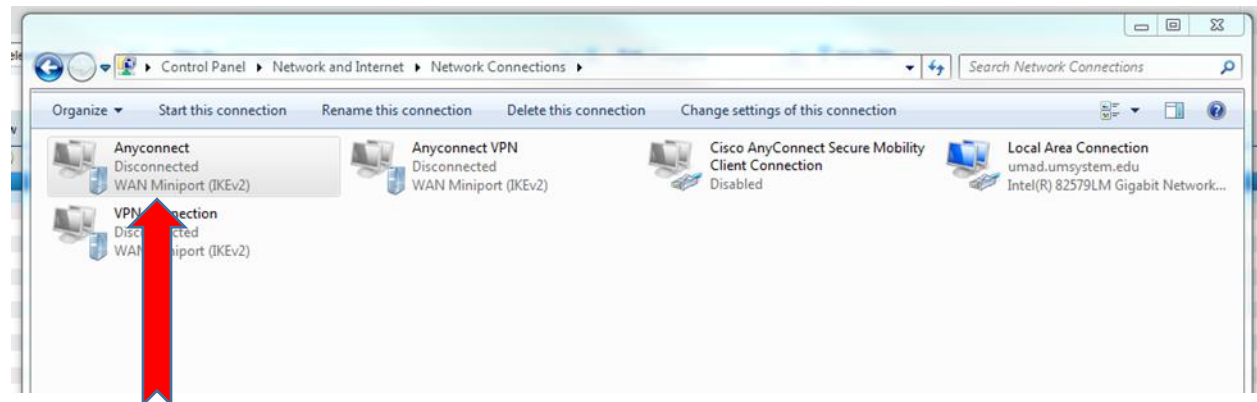
Select "Use preshared key for authentication", set key to "JoeMiner" and press OK



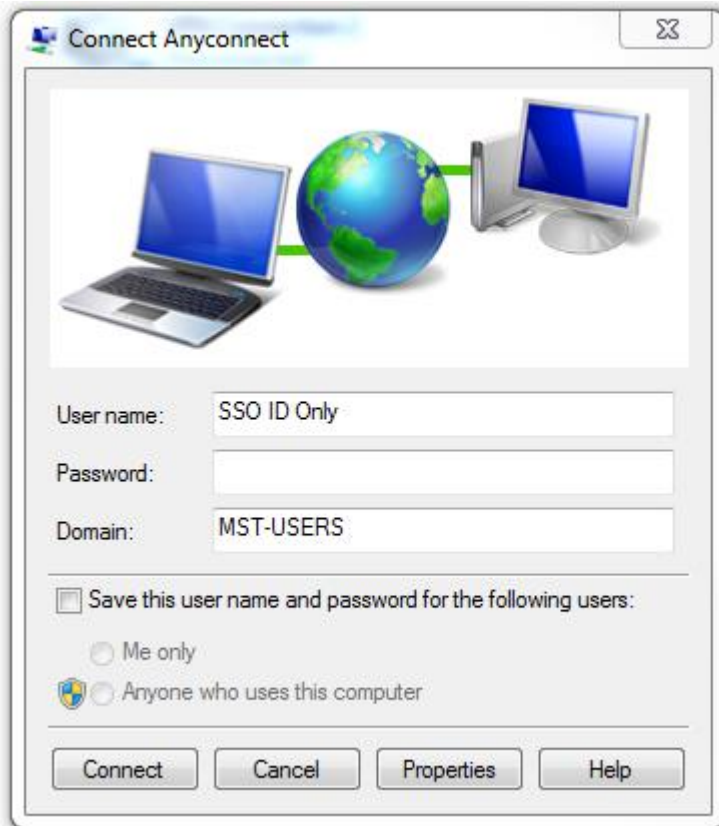
Ensure that Microsoft CHAP Version 2 (MS-CHAP v2) is checked and press OK.



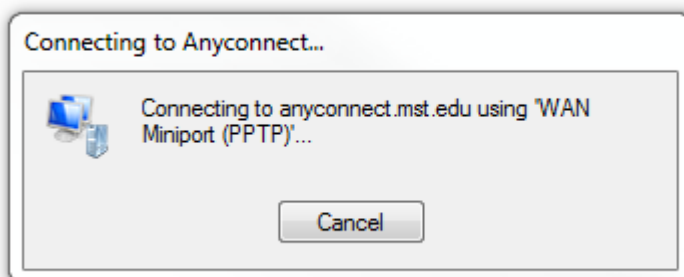
Right click on your created Anyconnect VPN and then Click on the **Connect** button



Connect to VPN and authenticate using your SSO username and password when prompted. Then click Connect after you have typed in your User name and Password.



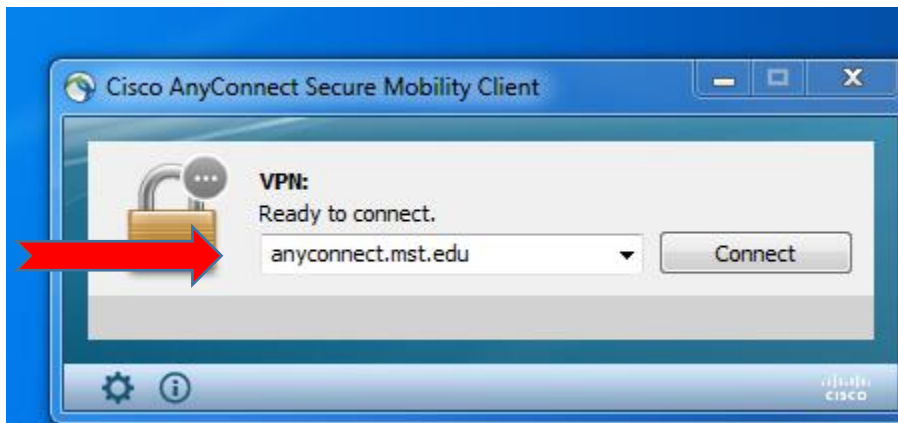
If everything worked then you should see this pop up on your computer.



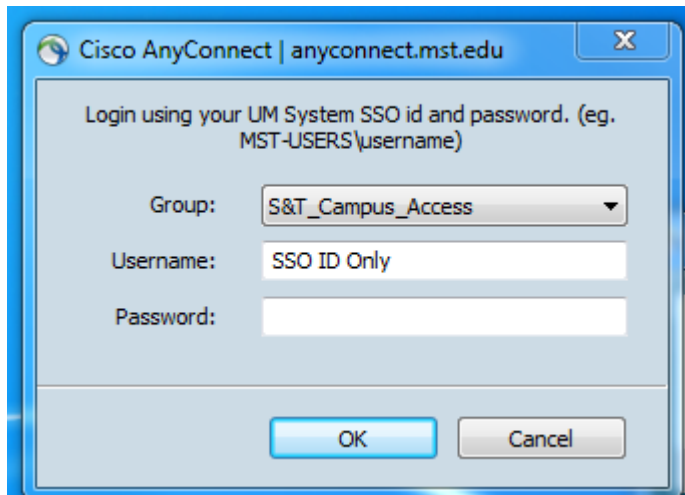
After it says you are connected then you will need to go to the Start button, click All Programs, then Cisco Folder, and finally the Cisco Anyconnect Security Mobility Client Folder, and you should see this.



Click on the Cisco ball and then in the right bottom corner you should see this. **Make sure it says Anyconnect.mst.edu.** Then click the Connect button.



Then you should get this. Type in the password and you should be connected to the Network.



The image shows a Cisco AnyConnect login dialog box. The title bar reads "Cisco AnyConnect | anyconnect.mst.edu". The main text says "Login using your UM System SSO id and password. (eg. MST-USERS\username)". There are three input fields: "Group" with a dropdown menu showing "S&T_Campus_Access", "Username" with the text "SSO ID Only", and "Password" which is currently empty. At the bottom, there are "OK" and "Cancel" buttons.

Cisco AnyConnect | anyconnect.mst.edu

Login using your UM System SSO id and password. (eg. MST-USERS\username)

Group: S&T_Campus_Access

Username: SSO ID Only

Password:

OK Cancel